

Garden Crest  
Rehabilitation Center  
909 North Lucile Avenue  
Los Angeles, CA 90026

Postage  
Information



“Quality is not an accident. It is the result of high intention, sincere effort, and skilled implementation.”

## We are stepping ahead with the times.....

Residents, families and friends can now enjoy our High Speed, Wireless, FREE WiFi connection.

Bring your laptop, iPad, or smart phone and connect to the world wide web in a click of a button.

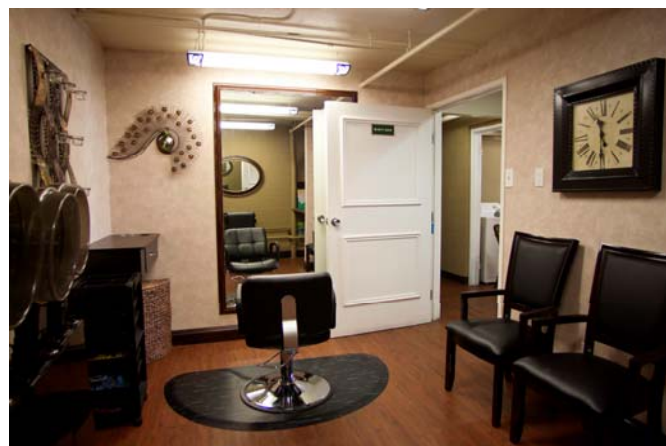
Bring your iPad or Laptop and enjoy free and secure internet access.



**For more information about our services and activities please contact Limor Ness Activity Director 323.663.8281 or by email [Activity@gardencrestweb.com](mailto:Activity@gardencrestweb.com)**

## Introducing Garden Crest's Newly Renovated Beauty Salon

Garden Crest has a full service hair salon on premises, located in the lower floor of Garden Crest Residential Care Facility. Our fully licensed Beautician/Hair Dresser, Irena is available on Tuesday every two weeks. If you would like an appointment, please schedule it in advance with Veronica, Director of Social Services.



# The Resident



October  
2011



Garden Crest Rehabilitation Center 909 N. Lucile Ave. Los Angeles, CA 90026 \* 323.663.8281

## Garden Crest Rehabilitation Center

Garden Crest Convalescent Hospital has changed its legal name. We are now **Garden Crest Rehabilitation Center**. New name, same excellent service with emphasis on short term rehabilitation services.

## Garden Crest... A Spectacular Place for Entertainment



Garden Crest enjoys entertaining bands and individual artists of all kinds. Last Grandparents Day was celebrated with the "Pay It Forward" Band that volunteers their time and resources to entertaining in nursing homes. An hour filled with great music that was picked earlier by the residents. Everybody had a grand time and are awaiting the next event. This month, we will be

hosting Mr. Nick Camas on the piano, Friday, October 14<sup>th</sup>, 2011 @ 2pm, Singer Carol Kelley in a Halloween Special on October 28<sup>th</sup>, 2011 @ 2pm and the amazing Mad Scientists with a GRAND Fire and Ice Show especially for Halloween. Please join us on Halloween Day, October 31<sup>st</sup>, 2011 @ 10:30am.



### Pet Therapy

October 6,12,19,26

### Columbus Day

October 10

### TGIF

With Live Entertainment

October 14

### Candlelight Dinner

October 24

### Halloween Special

October 28

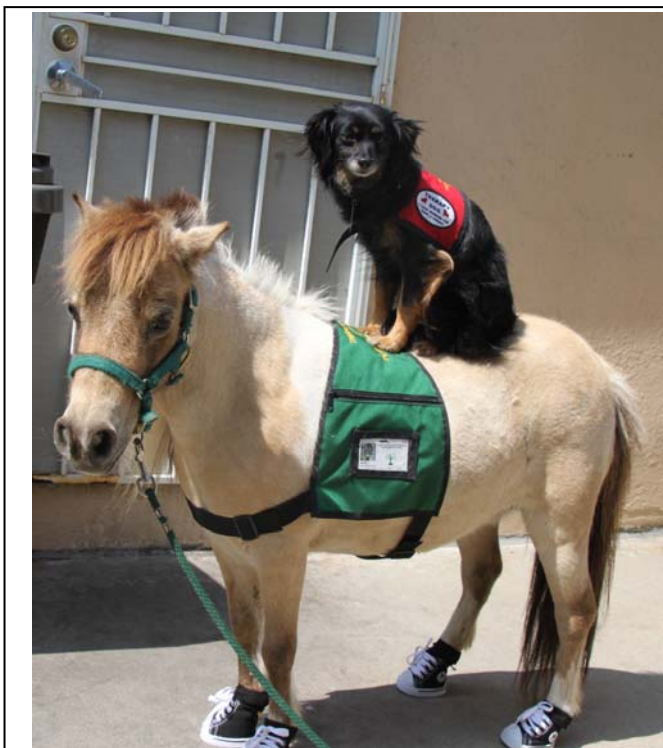
### Halloween Mad Science

October 31

## Miniature horse brightens lives

Barbie is an 11 year old miniature horse that measures just 29 inches high and weighs 175 pounds. Every Wednesday Barbie navigates wheel chairs and walkers, going from room to room where she nuzzles up for hugs. For residents, the experience is transporting. Residents await for her in the activity room, and in their own rooms if they cannot ambulate. She touches everyone she meets and is a big hit amongst family members, staff and residents.

No one can speak for Barbie, but it seems she gets as much as she gives. She gets excited when she sees her trailer come by to get her and enjoys the long ride to Silver Lake. It's her special day. When she gets to Garden Crest she naves with joy and awaits her sneakers so she can roam the halls. Be sure to come one day to meet Barbie and her other friends as they put on smiles at Garden Crest.



**Barbie** comes to Garden Crest every Wednesday at 10:30am and stays until lunch. Sometimes she comes with her "side kick" **Chofesh**, our in-house therapy dog who rides her around the facility and in the halls.



**BE APART OF OUR NEWSLETTER**  
If you would like to have an article or story published in our next newsletter, or have comments and ideas on how to improve our newsletter, please contact Limor Ness  
Activity Director  
We thrive for excellence and your input is valuable to us.

## YOUR REHABILITATION CENTER OF CHOICE

**Garden Crest is the facility of choice for families, physicians and health care providers seeking superior, cost-effective rehabilitation for family members, friends, residents and clients. Every resident is assured personalized attention and care from our highly trained and professionally regarded staff.**

**Because achieving optimum rehabilitation is our main focus, our Inter-Disciplinary Team evaluates all rehabilitation residents twice weekly. Resident rounds are made daily. Team members also meet regularly with the resident's attending physician and case manager to assure a speedy and effective recovery.**

**We work with the resident, the family members and the payor to set goals and establish a discharge plan prior to the resident's admission. Garden Crest has contracts with many HMO's and managed care providers. As a result of our expert and individualized case management, the great majority of our rehabilitation residents return home after a short-term, intensive program of therapy.**

**We arrange periodic meetings with the resident and family to discuss the resident rehabilitation status. We consider it essential that families are kept fully informed of the progress and prognosis of their family member.**

**Our rehabilitation team and social worker provide a personalized home evaluation and assessment, prior to discharge. This in-depth assistance eases the period of transition, thereby creating a sense of confidence, for both the resident and family, during the critical time when the resident returns home.**



**Medicare 5 Star Rated Facility**

## New and improved State of the Arts Rehabilitation Dept.

Recently we have completely remodeled our Rehabilitation Department with new, state of the art equipment, live plants and waterfall for a complete serene and calm atmosphere that promotes better health and recovery, lead by new Rehab Director Rose Anne Recendez, Physical Therapist, Ernesto Martinez, Occupational Therpay and Lynn Shaw, Speech Pathologist.

